

## ELECTRIC POWER INDUSTRY NEWS

### FAS ties preferential consumption limits for citizens to regional indicators

As Kommersant found out, the Federal Antimonopoly Service (FAS) proposes to significantly limit preferential electricity consumption for citizens. The new methodology proposes to calculate the limit based on actual regional energy consumption indicators. Now in those regions where a differentiated tariff has been introduced, it is set without such a link, and according to experts, it is several times higher than actual consumption. According to experts, the implementation of the FAS proposal could lead to an increase in tariffs for those exceeding the limit on preferential consumption by an average of 40%, but the limit itself will remain quite high, so the authorities can accept this compromise option.

Read full text: <https://kommersant.ru/>

## COMPANY NEWS

### Kurskenergo provided power supply to the “Korenskaya Fair – 2024”

One of the most significant events in the region traditionally took place in the town of Svoboda, Zolotukhinsky district. During the 3 days of the fair, Kurskenergo’s specialists provided reliable power supply to the trade pavilions. The power engineers installed additional power supplies with a total power of 60 kW and 12 floodlights, and inspected distribution boards and transformer substations. First responding mobile crews from the Zolotukhinsky Distribution Zone and special vehicles were on duty around the clock, reports the Informationbureau telegram channel.

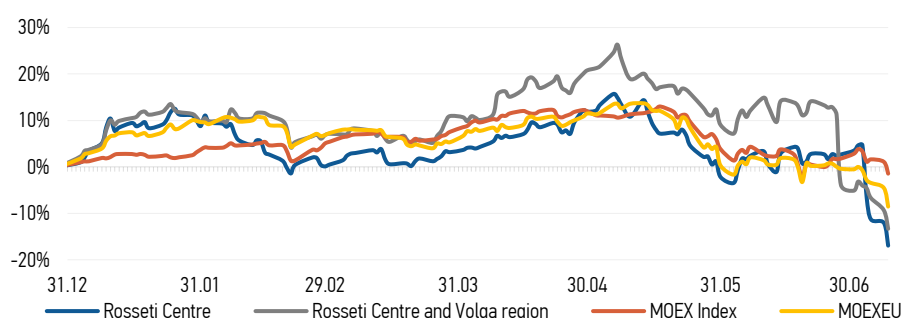
Read full text: <https://chr.aif.ru/>

### Vladimirenergo connected new cellular communication facilities and radio television networks to grids

Since the beginning of the year, the branch’s power engineers have connected 16 cellular base stations, antenna mast structures and radio and television stations to the power grid, reports the Informationbureau telegram channel.

Read full text: <https://mrsk-cp.ru/>

## CHANGES OF KEY INDEXES AND SHARES OF THE COMPANIES



## IR-NEWS

- [Rosseti Centre](#) and [Rosseti Centre and Volga region](#) published integrated annual reports for 2023
- [Rosseti Centre, PJSC](#) – managing organization of [Rosseti Centre and Volga region, PJSC](#) published a presentation on the companies’ performance results for 3 months of 2024
- Annual General Meeting of Shareholders of [Rosseti Centre, PJSC](#) held
- Annual General Meeting of Shareholders of [Rosseti Centre and Volga region, PJSC](#) held

### Rosseti Centre, PJSC

119017, Moscow, Malaya Ordynka St., 15

Corporate Governance Department

+7 (495) 747 92 92, ext. 33-34

ir@mrsk-1.ru

<http://www.mrsk-1.ru/en/investors/>



World indexes	Value	Change	
		per day	fr 31.12.23
MOEX Russia	3 054,07	-2,51%	-1,45%
S&P 500	5 576,98	0,07%	45,64%
FTSE 100	8 139,81	-0,66%	9,23%
Nikkei	41 580,17	1,96%	61,03%
Sensex	80 351,64	0,49%	32,07%
CSI300	3 439,67	1,11%	-10,81%
Bovespa	127 108,22	0,44%	20,67%

Source: MOEX, Company calculations

Currency rates	Value	Change	
		per day	fr 31.12.23
USD/RUB	88,1688	0,04%	-2,36%
EURO/RUB	95,6624	0,10%	-4,86%

Source: Central Bank of Russia, Company calculations

Liquidity of shares	Rosseti Centre	Rosseti Centre & Volga Reg
Number of deals, pcs	6 683	3 686
Trading volume, P mln	82,7	85,5
Trading volume, mln pcs	176,9	319,8
Average trading volume over the last 30 days, mln pcs	98,7	241,3
% of the share capital	0,42%	0,28%

Source: MOEX, Company calculations

Shares	Price*, P	MCap, P bln	MCap, \$ mln
Rosseti Centre	0,4672	19,72	223,71
Rosseti Centre and Volga region	0,2672	30,11	341,54

Source: MOEX, Company calculations

Comparison with indexes	Change	
	per day	fr 31.12.23
STOXX 600 Utilities	-0,46%	4,56%
MoexEU	-4,21%	-8,55%
Rosseti Centre*	-5,58%	-16,96%
Rosseti Centre and Volga region*	-4,40%	-13,33%

Source: MOEX, Company calculations

Grid companies	Change*	
	per day	fr 31.12.23
Rosseti	-3,20%	-9,61%
Rosseti Volga	-3,95%	9,66%
Rosseti Moscow Region	-2,53%	-12,64%
Rosseti Northern Caucasus	-4,78%	-12,38%
Rosseti North-West	-3,37%	-15,73%
Rosseti Ural	-4,12%	13,74%
Rosseti Siberia	-4,21%	-11,71%
Rosseti South	-4,87%	1,20%
Rosseti Lenenergo	-6,17%	-9,93%
Rosseti Tomsk	-1,22%	19,17%
Rosseti Kuban	-7,90%	2,66%

Source: MOEX, Company calculations

\* - at the market price at MOEX

## Tickers

Moscow Exchange (MOEX)

Bloomberg

Reuters

[MRKC](#)

[MRKC.RM](#)

[MRKC.MM](#)