

### ELECTRIC POWER INDUSTRY NEWS

#### Rosseti and Skolkovo opened the application process for participation in the Energy Breakthrough accelerator

The 12th Energy Breakthrough innovation development competition, which is being held by the Rosseti Group and Skolkovo (VEB.RF Group), has started. In 2024, the largest regional grid companies and manufacturing partners joined the program, which will provide support to participants at the start of serial production of the proposed products. The purpose of the competition is to select innovative solutions based on Russian high-readiness technologies (TRL 5 and above) for use in the grid complex.

Read full text: <https://www.rosseti.ru/>

### COMPANY NEWS

#### The Rosseti Centre company published its financial statements for 9 months of 2024 under RAS, EBITDA increased by 12,7%

According to the prepared in accordance with the Russian Accounting Standards statements for 9 months of 2024, revenue of Rosseti Centre, PJSC (the ticker – MRKC) was 93 976,1 mln RUB, including from electric energy transmission – 88 347,3 mln RUB, from grid connections – 2 996,1 mln RUB and other revenue – 2 632,7 mln RUB.

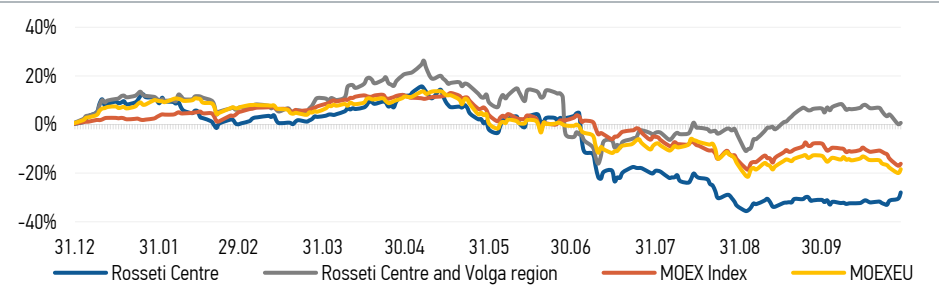
Read full text: <https://www.mrsk-1.ru/>

#### The Rosseti Centre and Volga region company published its financial statements for 9 months of 2024 under RAS, net profit increased by 15,2%

According to the prepared in accordance with the Russian Accounting Standards statements for 9 months of 2024, revenue of Rosseti Centre and Volga region, PJSC (the ticker – MRKP) was 99 817,3 mln RUB, including from electric energy transmission – 94 954,0 mln RUB, from grid connections – 2 997,8 mln RUB and other revenue – 1 865,5 mln RUB.

Read full text: <https://mrsk-cp.ru/>

### CHANGES OF KEY INDEXES AND SHARES OF THE COMPANIES



### IR-NEWS

- Financial statements of [Rosseti Centre](#) and [Rosseti Centre and Volga region](#) under RAS for 9M 2024 published
- All branches of [Rosseti Centre](#) and [Rosseti Centre and Volga region](#) have been defined as systemically important territorial grid organizations
- [Rosseti Centre](#) – managing organization of [Rosseti Centre and Volga region](#) published a presentation on the results of operations of the companies for 6 months of 2024 under IFRS

#### Rosseti Centre, PJSC

119017, Moscow, Malaya Ordynka St., 15

#### Corporate Governance Department

+7 (495) 747 92 92, ext. 33-34

ir@mrsk-1.ru

<http://www.mrsk-1.ru/en/investors/>



#### Tickers

Moscow Exchange (MOEX)

Bloomberg

Reuters

[MRKC](#)

[MRKC.RM](#)

[MRKC.MM](#)

World indexes	Value	Change	
		per day	fr 31.12.23
MOEX Russia	2 599.66	0.96%	-16.12%
S&P 500	5 832.92	0.16%	22.29%
FTSE 100	8 219.61	-0.80%	6.29%
Nikkei	38 903.68	0.77%	16.25%
Sensex	80 369.03	0.45%	11.25%
CSI300	3 924.54	-1.00%	14.38%
Bovespa	130 729.93	-0.37%	-2.58%

Source: MOEX, Company calculations

Currency rates	Value	Change	
		per day	fr 31.12.23
USD/RUB	97.2300	0.58%	8.41%
EURO/RUB	105.2229	0.39%	6.08%

Source: Central Bank of Russia, Company calculations

Liquidity of shares	Rosseti Centre	Rosseti Centre & Volga Reg
Number of deals, pcs	6 197	1 187
Trading volume, P mln	90.2	20.5
Trading volume, mln pcs	222.4	66.1
Average trading volume over the last 30 days, mln pcs	55.0	83.7
% of the share capital	0.53%	0.06%

Source: MOEX, Company calculations

Shares	Price*, P	MCap, P bln	MCap, \$ mln
Rosseti Centre	0.4054	17.12	176.03
Rosseti Centre and Volga region	0.3104	34.98	359.78

Source: MOEX, Company calculations

Comparison with indexes	Change	
	per day	fr 31.12.23
STOXX 600 Utilities	0.00%	3.97%
MoexEU	1.98%	-18.37%
Rosseti Centre*	3.74%	-27.94%
Rosseti Centre and Volga region*	0.49%	0.68%

Source: MOEX, Company calculations

Grid companies	Change*	
	per day	fr 31.12.23
Rosseti	-0.08%	-30.89%
Rosseti Volga	-0.08%	9.12%
Rosseti Moscow Region	-0.53%	-12.41%
Rosseti Northern Caucasus	-2.18%	-32.97%
Rosseti North-West	0.00%	-40.83%
Rosseti Ural	2.67%	2.44%
Rosseti Siberia	0.47%	-22.99%
Rosseti South	-0.35%	-13.36%
Rosseti Lenenergo	-1.25%	-32.57%
Rosseti Tomsk	-0.62%	-5.31%
Rosseti Kuban	1.93%	-53.18%

Source: MOEX, Company calculations

\* - at the market price at MOEX