

## ELECTRIC POWER INDUSTRY NEWS

### Rosseti wants to change the procedure for calculating payments for its services

According to Kommersant, Rosseti (MOEX: FEES) is proposing to switch to calculating payments for electricity transmission services based on the maximum actual power consumption, rather than during peak hours of the power grid. According to the state holding's estimates, due to the actions of large consumers who prefer to load capacities at night, up to RUB 40 billion are lost per year. The initiative has met with opposition from big business, but regulators have not been particularly critical of the idea. According to analysts, the proposal will allow Rosseti to quickly close the revenue shortfall, but in the future it should be supplemented by a more in-depth study of approaches to pricing the electricity transmission tariff.

Read full text: <https://kommersant.ru/>

## COMPANY NEWS

### Belgorodenergo provided electricity to about 227 residential buildings for socially vulnerable citizens

In 2024, specialists from the branch of Rosseti Centre, PJSC - Belgorodenergo provided electricity to 227 residential buildings built within the framework of the state program to provide affordable and comfortable housing to residents of the region, of which 91 houses are for orphans and children left without parental care, 42 are for large families and families raising disabled children, 94 new buildings are for displaced persons.

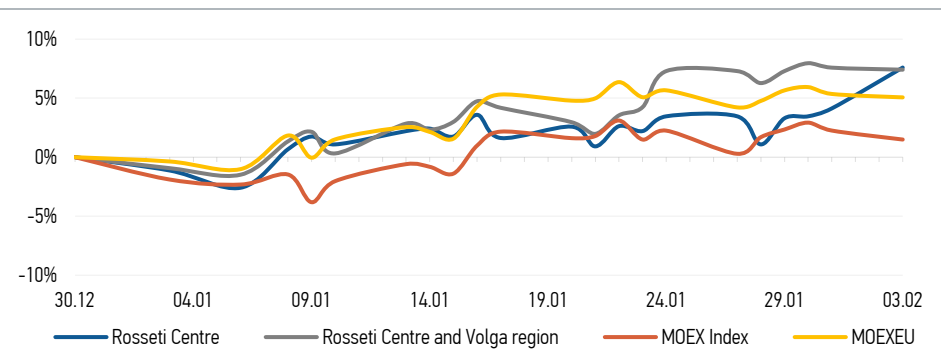
Read full text: <https://kommersant.ru/>

### Another Distribution Zone created in Marienergo

The branch of Rosseti Centre and Volga region, PJSC - Marienergo continues to work on consolidating electric grid assets. As a result of accepting 2,799 conventional units of equipment for maintenance on the territory of the urban district "City of Volzhsk" of the Republic of Mari El, a new structural subdivision was created – "Volzhsky City Distribution Zone".

Read full text: <https://mrsk-cp.ru/>

## CHANGES OF KEY INDEXES AND SHARES OF THE COMPANIES



## IR-NEWS

- Boris Ebzeev headed [Rosseti Centre](#) – managing organization of [Rosseti Centre and Volga region](#)
- [Rosseti Centre](#) – managing organization of [Rosseti Centre and Volga region](#) published a presentation on the results of operations of the companies for 9 months of 2024 under IFRS
- [Rosseti Centre and Rosseti Centre and Volga region](#) assigned the highest non-financial reporting rating

## Rosseti Centre, PJSC

119017, Moscow, Malaya Ordynka St., 15

### Corporate Governance Department

+7 (495) 747 92 92, ext. 33-34

ir@mrsk-1.ru

<http://www.mrsk-1.ru/en/investors/>



| World indexes | Value      | Change  |             |
|---------------|------------|---------|-------------|
|               |            | per day | fr 31.12.24 |
| MOEX Russia   | 2 926,17   | -0,74%  | 1,50%       |
| S&P 500       | 5 994,57   | -0,76%  | 1,48%       |
| FTSE 100      | 8 583,56   | -1,04%  | 5,70%       |
| Nikkei        | 38 520,09  | -2,66%  | -3,45%      |
| Sensex        | 77 186,74  | -0,40%  | -1,36%      |
| CSI300        | 3 817,08   | 0,00%   | -4,55%      |
| Bovespa       | 125 970,46 | -0,13%  | 4,73%       |

Source: MOEX, Company calculations

| Currency rates | Value    | Change  |             |
|----------------|----------|---------|-------------|
|                |          | per day | fr 31.12.24 |
| USD/RUB        | 97,8107  | 0,00%   | -3,81%      |
| EURO/RUB       | 102,1301 | 0,00%   | -3,74%      |

Source: Central Bank of Russia, Company calculations

| Liquidity of shares                                   | Rosseti Centre       | Rosseti Centre & Volga Reg |
|---|----------------------|----------------------------|
|   | Number of deals, pcs | 8 573                      |
| Trading volume, P mln                                 | 125,0                | 13,0                       |
| Trading volume, mln pcs                               | 242,4                | 35,2                       |
| Average trading volume over the last 30 days, mln pcs | 53,5                 | 79,2                       |
| % of the share capital                                | 0,57%                | 0,03%                      |

Source: MOEX, Company calculations

| Shares                          | Price*, P | MCap, P bln | MCap, \$ mln |
|---------------------------------|-----------|-------------|--------------|
| Rosseti Centre                  | 0,5156    | 21,77       | 222,55       |
| Rosseti Centre and Volga region | 0,3695    | 41,64       | 425,74       |

Source: MOEX, Company calculations

| Comparison with indexes          | Change  |             |
|----------------------------------|---------|-------------|
|                                  | per day | fr 31.12.24 |
| STOXX 600 Utilities              | 0,06%   | 1,91%       |
| MoexEU                           | -0,28%  | 5,07%       |
| Rosseti Centre*                  | 3,33%   | 7,60%       |
| Rosseti Centre and Volga region* | -0,16%  | 7,41%       |

Source: MOEX, Company calculations

| Grid companies            | Change* |             |
|---------------------------|---------|-------------|
|                           | per day | fr 31.12.24 |
| Rosseti                   | -2,75%  | 1,01%       |
| Rosseti Volga             | -1,24%  | 4,80%       |
| Rosseti Moscow Region     | 0,94%   | 9,88%       |
| Rosseti Northern Caucasus | -0,45%  | 8,17%       |
| Rosseti North-West        | -1,64%  | 17,30%      |
| Rosseti Ural              | -1,60%  | 18,41%      |
| Rosseti Siberia           | -1,78%  | 0,78%       |
| Rosseti South             | -1,36%  | 17,71%      |
| Rosseti Lenenergo         | -1,52%  | 8,86%       |
| Rosseti Tomsk             | 9,15%   | 26,50%      |

Source: MOEX, Company calculations

\* - at the market price at MOEX

## Tickers

Moscow Exchange (MOEX)

[MRKC](#)

Bloomberg

[MRKC RM](#)

Reuters

[MRKC.MM](#)