

### ELECTRIC POWER INDUSTRY NEWS

#### Households are increasing energy consumption faster than businesses

Electricity consumption by the population is growing faster than that of business, according to the National Research University Higher School of Economics. Over the past decade, household demand has increased by an average of 2.9% per year, while corporate demand has increased by only 0.9%. The surge in consumption in the household sector began in 2020 due to people switching to remote work because of the pandemic and continues in some regions with the development of tourism and gray cryptocurrency mining. However, regulators continue to restrain the growth of tariffs for the population, increasing the burden on business, analysts say.

Read full text: <https://www.kommersant.ru/>

### COMPANY NEWS

#### Igor Makovskiy held a working meeting with the head of the administration of the Shebekinsky urban district Vladimir Zhdanov

At the meeting, they discussed the work of power engineers in the border region in the face of an increased level of external threats, and also outlined further steps to counter enemy terrorist attacks and increase the reliability of the power grid complex of the Shebekinsky urban district.

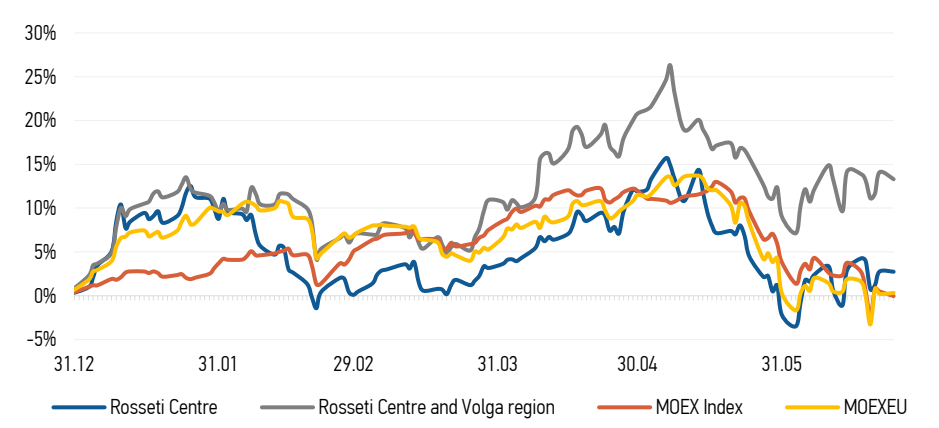
Read full text: <https://mrsk-1.ru/>

#### Power engineers warn: work in security zones of power facilities is deadly dangerous

Summer is the height of construction and repair work, as well as work on private land plots and farmland, including the use of large special equipment. In this regard, Rosseti Centre and Volga region - Udmurtenergo recalls the rules of safe behaviour near power facilities.

Read full text: <https://mrsk-cp.ru/>

### CHANGES OF KEY INDEXES AND SHARES OF THE COMPANIES



### IR-NEWS

- [Rosseti Centre, PJSC](#) – managing organization of [Rosseti Centre and Volga region, PJSC](#) published a presentation on the companies' performance results for 3 months of 2024
- Annual General Meeting of Shareholders of [Rosseti Centre, PJSC](#) held
- Annual General Meeting of Shareholders of [Rosseti Centre and Volga region, PJSC](#) held

### Rosseti Centre, PJSC

119017, Moscow, Malaya Ordynka St., 15

#### Corporate Governance Department

+7 (495) 747 92 92, ext. 33-34

ir@mrsk-1.ru

<http://www.mrsk-1.ru/en/investors/>



World indexes	Value	Change	
		per day	fr 31.12.23
MOEX Russia	3 098,05	-0,52%	-0,03%
S&P 500	5 447,87	-0,31%	42,27%
FTSE 100	8 281,55	0,53%	11,14%
Nikkei	38 804,65	0,54%	50,28%
Sensex	77 341,08	0,17%	27,12%
CSI300	3 476,81	-0,54%	-9,85%
Bovespa	122 643,00	1,07%	16,43%

Source: MOEX, Company calculations

Currency rates	Value	Change	
		per day	fr 31.12.23
USD/RUB	87,9595	2,98%	-2,60%
EURO/RUB	94,2606	3,07%	-6,26%

Source: Central Bank of Russia, Company calculations

Liquidity of shares	Rosseti Centre & Volga Reg	
	Rosseti Centre	Rosseti Centre & Volga Reg
Number of deals, pcs	1 205	2 392
Trading volume, P mln	12,7	61,4
Trading volume, mln pcs	22,0	175,8
Average trading volume over the last 30 days, mln pcs	79,3	176,9
% of the share capital	0,05%	0,16%

Source: MOEX, Company calculations

Shares	Price*, P	MCap, P bln	MCap, \$ mln
Rosseti Centre	0,5780	24,40	277,42
Rosseti Centre and Volga region	0,3493	39,37	447,54

Source: MOEX, Company calculations

Comparison with indexes	Change	
	per day	fr 31.12.23
STOXX 600 Utilities	0,00%	4,90%
MoexEU	0,12%	0,33%
Rosseti Centre*	-0,03%	2,74%
Rosseti Centre and Volga region*	-0,71%	13,30%

Source: MOEX, Company calculations

Grid companies	Change*	
	per day	fr 31.12.23
Rosseti	-0,06%	-3,82%
Rosseti Volga	0,22%	22,92%
Rosseti Moscow Region	-1,20%	-0,39%
Rosseti Northern Caucasus	0,27%	-6,56%
Rosseti North-West	-1,98%	-9,70%
Rosseti Ural	-2,93%	24,06%
Rosseti Siberia	-0,76%	-6,18%
Rosseti South	-0,82%	9,01%
Rosseti Lenenergo	0,05%	1,87%
Rosseti Tomsk	3,55%	28,91%
Rosseti Kuban	-3,12%	14,79%

Source: MOEX, Company calculations

\* - at the market price at MOEX

### Tickers

Moscow Exchange (MOEX)

Bloomberg

Reuters

[MRKC](#)

[MRKC.RM](#)

[MRKC.MM](#)