

ELECTRIC POWER INDUSTRY NEWS

Ministry of Energy: "Energy demand in the Russian Federation has decreased by 1.4% since the beginning of the year, excluding the leap year"

The volume of electricity consumption in Russia has decreased by 1.4% since the beginning of 2025, excluding the leap year of 2024, when February had 29 days. At the same time, in the south and the Far East, the indicator increased by 2.5-3%, Deputy Minister of Energy of the Russian Federation Evgeniy Grabchak said in an interview with TASS at the Russia - Islamic World forum in Kazan. According to the Deputy Minister, some regions, such as the south and the Far East, are showing significant growth. Electricity consumption there has increased by 2.5-3% compared to last year.

Read full text: <https://peretok.ru>

COMPANY NEWS

Rosseti Centre to reduce investment in the Lipetsk region's electric grid complex by 23% in 2025

PJSC Rosseti will invest about RUB 2 billion in the development of Lipetsk region's electric grid complex as part of its investment program in 2025, the press service of Rosseti Centre reported. According to the branch, the investment program in 2024 amounted to RUB 2.6 billion. Thus, this year the investment volume will decrease by 23%.

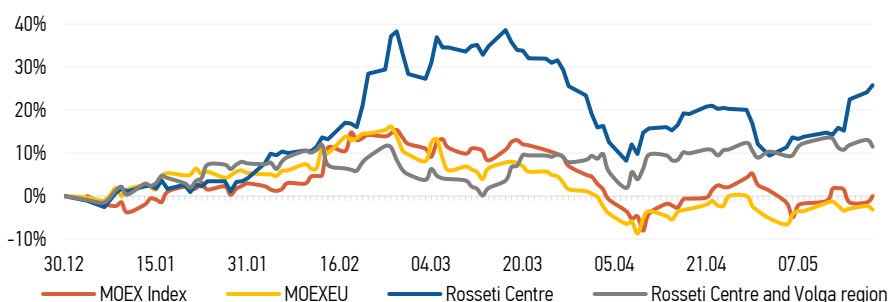
Read full text: <https://www.interfax-russia.ru>

The Ryazanenergo branch continues to hold meetings with consumers

The branch of Rosseti Centre and Volga region - Ryazanenergo continues to hold the Customer Day. The list of topics on which consumers can contact the energy company has been expanded. Residents can receive consultations on issues of quality and reliability of power supply, new connection to electrical networks, etc.

Read full text: <https://www.mrsk-cp.ru>

CHANGES OF KEY INDEXES AND SHARES OF THE COMPANIES



IR-NEWS

- On the decisions taken by the management bodies of [Rosseti Centre and Volga region](#)
- On the decisions taken by the management bodies of [Rosseti Centre](#)
- Financial statements of [Rosseti Centre](#) and [Rosseti Centre and Volga region](#) under RAS for 1Q 2025 published

Rosseti Centre, PJSC

119017, Moscow, Malaya Ordynka St., 15

Corporate Governance Department

+7 (495) 747 92 92, ext. 33-34

ir@mrsk-1.ru

<http://www.mrsk-1.ru/en/investors/>



World indexes	Value	Change	
		per day	fr 31.12.24
MOEX Russia	2 823,42	-2,05%	-2,07%
S&P 500	5 940,46	-0,39%	0,57%
FTSE 100	8 781,12	0,94%	8,13%
Nikkei	37 616,50	-0,28%	-5,71%
Sensex	81 186,44	-1,06%	3,76%
CSI300	3 898,17	-0,07%	-2,52%
Bovespa	140 110,00	0,34%	16,48%

Source: MOEX, Company calculations

Currency rates	Value	Change	
		per day	fr 31.12.24
USD/RUB	80,4137	-0,44%	-20,91%
EURO/RUB	90,5098	-0,22%	-14,70%

Source: Central Bank of Russia, Company calculations

Liquidity of shares	Rosseti Centre	Rosseti Centre & Volga Reg
Number of deals, pcs	2 448	1 245
Trading volume, P mln	32,7	25,6
Trading volume, mln pcs	54,2	66,8
Average trading volume over the last 30 days, mln pcs	50,1	95,2
% of the share capital	0,13%	0,06%

Source: MOEX, Company calculations

Shares	Price*, P	MCap, P bln	MCap, \$ mln
Rosseti Centre	0,6028	25,45	316,48
Rosseti Centre and Volga region	0,3835	43,22	537,47

Source: MOEX, Company calculations

Comparison with indexes	Change	
	per day	fr 31.12.24
STOXX 600 Utilities	1,84%	17,25%
MoexEU	-0,87%	-3,20%
Rosseti Centre*	1,34%	25,79%
Rosseti Centre and Volga region*	-1,39%	11,48%

Source: MOEX, Company calculations

Grid companies	Change*	
	per day	fr 31.12.24
Rosseti	-1,59%	-11,65%
Rosseti Volga	3,04%	31,01%
Rosseti Moscow Region	-0,33%	4,19%
Rosseti Northern Caucasus	0,00%	-3,90%
Rosseti North-West	-1,41%	17,75%
Rosseti Ural	-0,76%	13,91%
Rosseti Siberia	-1,53%	-4,45%
Rosseti South	4,24%	26,18%
Rosseti Lenenergo	-1,01%	0,22%
Rosseti Tomsk	-0,34%	3,53%

Source: MOEX, Company calculations

Tickers

Moscow Exchange (MOEX)

Bloomberg

Reuters

[MRKC](#)

[MRKC RM](#)

[MRKC.MM](#)