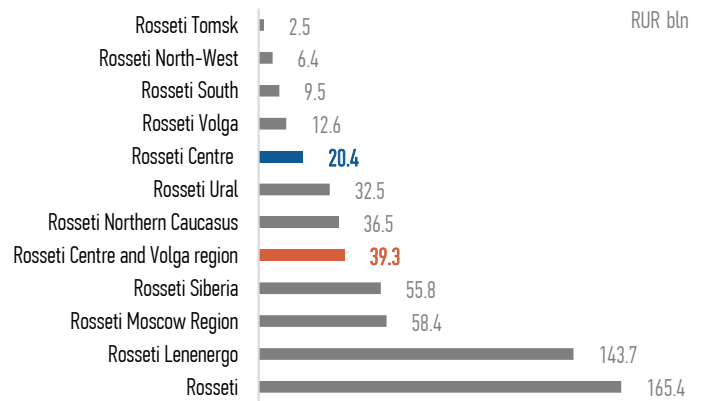
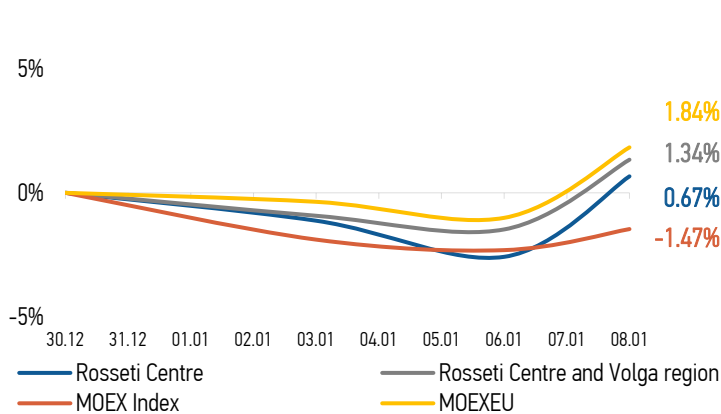


**CHANGES OF KEY INDEXES AND SHARES OF THE COMPANIES**
**CAPITALIZATION**

**SHARES OF ROSSETI CENTRE**

Date	Market price, RUB	Market price change, %	Trading volume, RUB	Trading volume, pcs	% of share capital	Number of deals, pcs
28.12.2024	0,4682	0,56%	10 273 720	21 942 000	0,05%	3 760
30.12.2024	0,4792	2,35%	17 553 418	36 626 000	0,09%	1 746
03.01.2025	0,4738	-1,13%	5 721 895	12 079 000	0,03%	1 155
06.01.2025	0,4668	-1,48%	6 038 575	12 934 000	0,03%	833
08.01.2025	0,4824	3,34%	40 697 187	84 352 000	0,20%	3 953
<b>Average trading volume over the last 30 days</b>				<b>55 269 067</b>	<b>0,13%</b>	

**SHARES OF ROSSETI CENTRE AND VOLGA REGION**

Date	Market price, RUB	Market price change, %	Trading volume, RUB	Trading volume, pcs	% of share capital	Number of deals, pcs
28.12.2024	0,3382	0,68%	32 122 844	94 990 000	0,08%	1 114
30.12.2024	0,3440	1,71%	29 422 310	85 540 000	0,08%	1 273
03.01.2025	0,3408	-0,93%	12 820 830	37 620 000	0,03%	714
06.01.2025	0,3389	-0,56%	12 860 122	37 950 000	0,03%	637
08.01.2025	0,3486	2,86%	49 043 521	140 670 000	0,12%	1 934
<b>Average trading volume over the last 30 days</b>				<b>87 703 667</b>	<b>0,08%</b>	

**CHANGES OF PRICES OF SHARES OF GRID COMPANIES**

Grid companies	Change*		Grid companies	Change*	
	for 5 days	from 31.12.24		for 5 days	from 31.12.24
Rosseti, ordinary shares	6,19%	1,74%	Rosseti Ural	13,48%	8,71%
Rosseti Centre	3,61%	0,67%	Rosseti North-West	33,93%	19,08%
Rosseti Centre and Volga region	3,78%	1,34%	Rosseti Siberia	7,58%	2,70%
Rosseti Volga	6,89%	3,25%	Rosseti South	15,88%	7,36%
Rosseti Moscow Region	5,97%	2,48%	Rosseti Lenenergo, ordinary shares	16,80%	6,37%
Rosseti Northern Caucasus	11,94%	6,34%	Rosseti Tomsk, ordinary shares	7,38%	2,83%

Source: data from moex.com, Company calculations

\* - at the market price at MOEX