

ELECTRIC POWER INDUSTRY NEWS

Rosseti increased revenue by 6% in the first half of the year, to more than RUB 720 billion

PJSC Rosseti increased revenue by 6% in the first half of 2024 compared to the same period last year, to more than RUB 720 billion, said the company's CEO Andrey Ryumin at a meeting with Russian Prime Minister Mikhail Mishustin.

Rosseti's investment program in 2024 will also exceed last year's figures, Ryumin added.

"I think there will be record figures for the investment program. We already see that in the first half of the year they are 16% higher than last year," the top manager said.

Read full text: <https://interfax.ru/>

COMPANY NEWS

Igor Makovskiy awarded power engineers for courage and selfless work in the Kursk border area

A ceremonial formation of Rosseti Centre's power engineers, who work in the "gray zone" of the Kursk region, took place in the camp of the Rapid Deployment Group (RDG). The national flag was raised to the sounds of the Russian anthem.

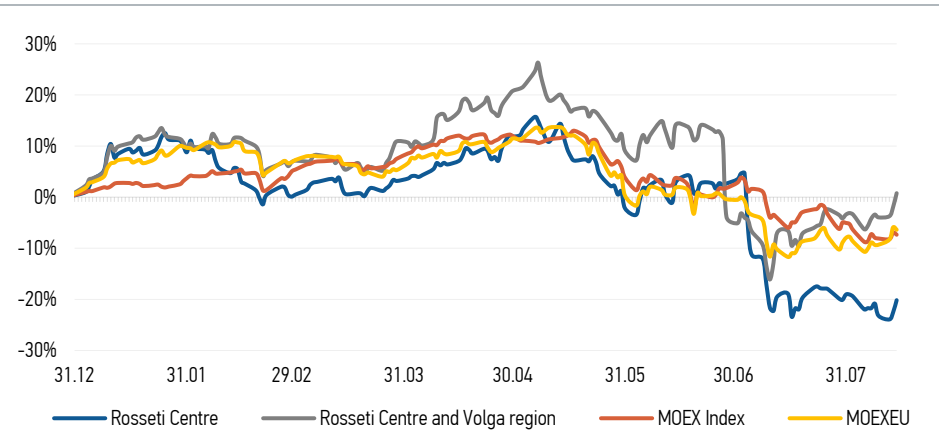
Read full text: <https://mrsk-1.ru/>

Rosseti Centre warns of increased cases of fraud against electricity consumers

Recently, there have been more cases of fraud by people posing as specialists of Rosseti Centre and Rosseti Centre and Volga region. In particular, the attackers offer to replace electricity meters over the phone. At the same time, the fraudsters demand that they provide personal information, personal data, passwords or pay for this service.

Read full text: <https://mrsk-cp.ru/>

CHANGES OF KEY INDEXES AND SHARES OF THE COMPANIES



IR-NEWS

- Financial statements of [Rosseti Centre](#) and [Rosseti Centre and Volga region](#) under RAS for 6M 2024 published
- [Rosseti Centre](#) and [Rosseti Centre and Volga region](#) published integrated annual reports for 2023
- [Rosseti Centre, PJSC](#) – managing organization of [Rosseti Centre and Volga region, PJSC](#) published a presentation on the companies' performance results for 3 months of 2024

Rosseti Centre, PJSC

119017, Moscow, Malaya Ordynka St., 15

Corporate Governance Department

+7 (495) 747 92 92, ext. 33-34

ir@mrsk-1.ru

<http://www.mrsk-1.ru/en/investors/>



Tickers

Moscow Exchange (MOEX)

Bloomberg

Reuters

[MRKC](#)

[MRKC.RM](#)

[MRKC.MM](#)

| World indexes | Value | Change | |
|---------------|------------|---------|-------------|
| | | per day | fr 31.12.23 |
| MOEX Russia | 2 871,11 | -0,47% | -7,36% |
| S&P 500 | 5 455,21 | 0,38% | 42,46% |
| FTSE 100 | 8 281,05 | 0,56% | 11,13% |
| Nikkei | 36 442,43 | 0,58% | 41,14% |
| Sensex | 79 105,88 | 0,19% | 30,02% |
| CSI300 | 3 309,24 | -0,75% | -14,20% |
| Bovespa | 133 317,66 | 0,69% | 26,57% |

Source: MOEX, Company calculations

| Currency rates | Value | Change | |
|----------------|----------|---------|-------------|
| | | per day | fr 31.12.23 |
| USD/RUB | 92,6592 | 3,01% | 2,61% |
| EURO/RUB | 100,5590 | 4,01% | 0,01% |

Source: Central Bank of Russia, Company calculations

| Liquidity of shares | Rosseti Centre | Rosseti Centre & Volga Reg |
|-------------------------------------------------------|----------------|----------------------------|
| Number of deals, pcs | 5 438 | 3 192 |
| Trading volume, P mln | 60,7 | 78,8 |
| Trading volume, mln pcs | 135,2 | 253,5 |
| Average trading volume over the last 30 days, mln pcs | 97,7 | 155,1 |
| % of the share capital | 0,32% | 0,22% |

Source: MOEX, Company calculations

| Shares | Price*, P | MCap, P bln | MCap, \$ mln |
|---------------------------------|-----------|-------------|--------------|
| Rosseti Centre | 0,4492 | 18,96 | 204,67 |
| Rosseti Centre and Volga region | 0,3107 | 35,02 | 377,89 |

Source: MOEX, Company calculations

| Comparison with indexes | Change | |
|----------------------------------|---------|-------------|
| | per day | fr 31.12.23 |
| STOXX 600 Utilities | -0,47% | 6,84% |
| MoexEU | -0,49% | -6,38% |
| Rosseti Centre* | 3,12% | -20,16% |
| Rosseti Centre and Volga region* | 2,81% | 0,78% |

Source: MOEX, Company calculations

| Grid companies | Change* | |
|---------------------------|---------|-------------|
| | per day | fr 31.12.23 |
| Rosseti | 2,71% | -6,11% |
| Rosseti Volga | 5,45% | 15,25% |
| Rosseti Moscow Region | 2,40% | -4,81% |
| Rosseti Northern Caucasus | 5,12% | -13,04% |
| Rosseti North-West | 10,03% | -6,37% |
| Rosseti Ural | 4,76% | 17,22% |
| Rosseti Siberia | 17,38% | -2,01% |
| Rosseti South | 11,58% | 15,02% |
| Rosseti Lenenergo | 7,63% | -6,57% |
| Rosseti Tomsk | 5,34% | 22,12% |
| Rosseti Kuban | 9,69% | 5,47% |

Source: MOEX, Company calculations

* - at the market price at MOEX