

ELECTRIC POWER INDUSTRY NEWS

The "take or pay" principle in power grids may be extended to all consumers, not just new ones

Andrey Maksimov, Director of the Department for Development of the Electric Power Industry of the Ministry of Energy of the Russian Federation, did not rule out that the definition of the volume of services for electric power transmission on the "take or pay" principle may be extended to all consumers, not just new ones. Earlier, it was reported that the Ministry of Energy had developed a draft government resolution that provides for the definition of the volume of services for electric power transmission and their payment based on the declared maximum capacity, and not actual consumption.

Read full text: <https://www.bigpowernews.ru/>

COMPANY NEWS

Rosseti Centre in Bryansk provided power supply to a polyclinic for 800 visits per shift

Employees of the branch of Rosseti Centre, PJSC - Bryanskenergo and Bryanskelectro LLC connected a five-story building of polyclinic No. 4 to the Company's grids. The healthcare facility, which consumes 900 kW of power, is located in the Sovetsky district of the regional centre and is designed for 800 visits per shift.

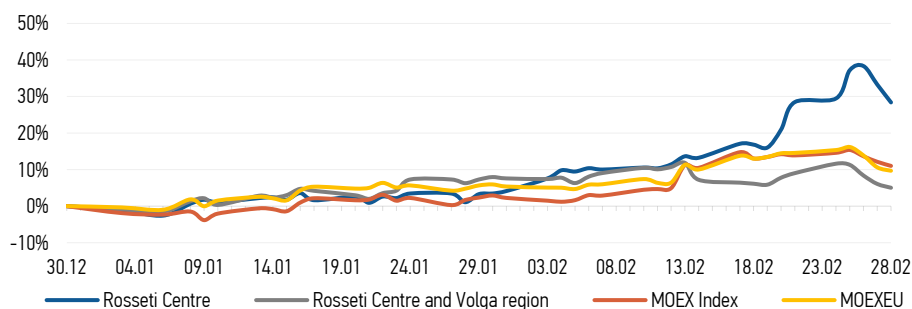
Read full text: <https://mrsk-1.ru/>

Rosseti Centre and Volga region connected new medical equipment to the company's grids in Izhevsk

The capacity of the grid connection of the First Republican Clinical Hospital, on the basis of which the Regional Vascular Centre operates, was increased by 350 kW. To ensure high reliability of power supply of new high-tech equipment – an angiographic tool, power supply is provided from two power supply centres - SS 220/110/10 "Izhevsk" and SS 110/10 "Igerman".

Read full text: <https://mrsk-cp.ru/>

CHANGES OF KEY INDEXES AND SHARES OF THE COMPANIES



IR-NEWS

- [Rosseti Centre](#) and [Rosseti Centre and Volga region](#) approved the Companies' Business Plan for 2025
- Boris Ebzeev headed [Rosseti Centre](#) – managing organization of [Rosseti Centre and Volga region](#)
- [Rosseti Centre](#) – managing organization of [Rosseti Centre and Volga region](#) published a presentation on the results of operations of the companies for 9 months of 2024 under IFRS

Rosseti Centre, PJSC

119017, Moscow, Malaya Ordynka St., 15

Corporate Governance Department

+7 (495) 747 92 92, ext. 33-34

ir@mrsk-1.ru

<http://www.mrsk-1.ru/en/investors/>



World indexes	Value	Change	
		per day	fr 31.12.24
MOEX Russia	3 200.48	-1.00%	11.01%
S&P 500	5 954.50	1.59%	0.81%
FTSE 100	8 809.74	0.61%	8.48%
Nikkei	37 152.50	-1.38%	-6.87%
Sensex	73 198.10	-1.90%	-6.45%
CSI300	3 890.05	-1.97%	-2.73%
Bovespa	122 799.09	-1.60%	2.09%

Source: MOEX, Company calculations

Currency rates	Value	Change	
		per day	fr 31.12.24
USD/RUB	87.6967	2.06%	-13.75%
EURO/RUB	92.0362	2.06%	-13.26%

Source: Central Bank of Russia, Company calculations

Liquidity of shares	Rosseti Centre	Rosseti Centre & Volga Reg
Number of deals, pcs	2 756	1 723
Trading volume, ₺ mln	48.2	65.6
Trading volume, mln pcs	78.4	181.6
Average trading volume over the last 30 days, mln pcs	95.6	138.1
% of the share capital	0.19%	0.16%

Source: MOEX, Company calculations

Shares	Price*, ₺	MCap, ₺ bln	MCap, \$ mln
Rosseti Centre	0.6152	25.97	296.16
Rosseti Centre and Volga region	0.3613	40.72	464.30

Source: MOEX, Company calculations

Comparison with indexes	Change	
	per day	fr 31.12.24
STOXX 600 Utilities	0.00%	4.17%
MoexEU	-0.84%	9.69%
Rosseti Centre*	-3.66%	28.38%
Rosseti Centre and Volga region*	-0.99%	5.03%

Source: MOEX, Company calculations

Grid companies	Change*	
	per day	fr 31.12.24
Rosseti	-2.13%	4.97%
Rosseti Volga	-2.42%	15.39%
Rosseti Moscow Region	-2.21%	9.84%
Rosseti Northern Caucasus	-0.53%	13.66%
Rosseti North-West	-3.63%	27.06%
Rosseti Ural	-1.10%	25.83%
Rosseti Siberia	0.64%	9.50%
Rosseti South	-4.81%	28.74%
Rosseti Lenenergo	-3.94%	21.38%
Rosseti Tomsk	-1.19%	17.67%

Source: MOEX, Company calculations

* - at the market price at MOEX

Tickers

Moscow Exchange (MOEX)

Bloomberg

Reuters

[MRKC](#)

[MRKC.M](#)

[MRKC.MM](#)