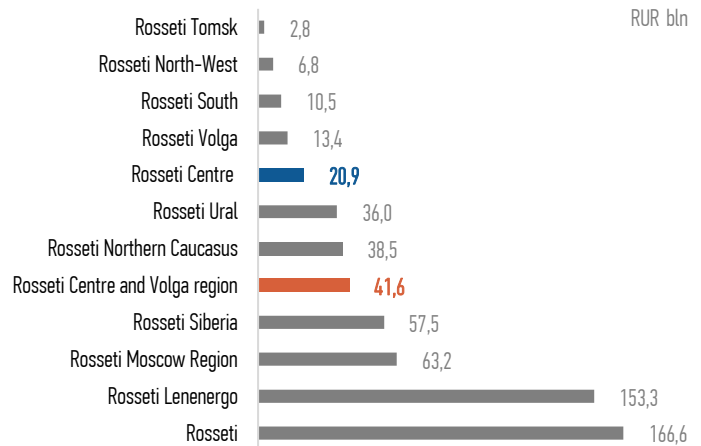
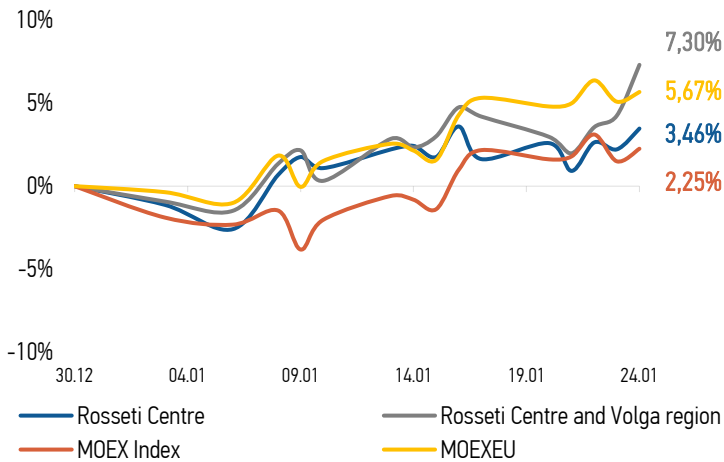


CHANGES OF KEY INDEXES AND SHARES OF THE COMPANIES
CAPITALIZATION

SHARES OF ROSSETI CENTRE

Date	Market price, RUB	Market price change, %	Trading volume, RUB	Trading volume, pcs	% of share capital	Number of deals, pcs
20.01.2025	0,4916	0,94%	22 597 410	45 973 000	0,11%	2 032
21.01.2025	0,4836	-1,63%	26 616 311	55 047 000	0,13%	1 939
22.01.2025	0,4918	1,70%	28 360 271	57 660 000	0,14%	3 501
23.01.2025	0,4898	-0,41%	10 280 619	20 993 000	0,05%	2 590
24.01.2025	0,4958	1,22%	18 962 346	38 246 000	0,09%	1 569
Average trading volume over the last 30 days				47 525 000	0,11%	

SHARES OF ROSSETI CENTRE AND VOLGA REGION

Date	Market price, RUB	Market price change, %	Trading volume, RUB	Trading volume, pcs	% of share capital	Number of deals, pcs
20.01.2025	0,3542	-1,17%	35 538 693	100 330 000	0,09%	1 326
21.01.2025	0,3508	-0,96%	24 803 028	70 710 000	0,06%	1 011
22.01.2025	0,3562	1,54%	19 370 726	54 380 000	0,05%	796
23.01.2025	0,3586	0,67%	35 440 597	98 820 000	0,09%	1 143
24.01.2025	0,3691	2,93%	60 196 544	163 110 000	0,14%	1 975
Average trading volume over the last 30 days				84 580 667	0,08%	

CHANGES OF PRICES OF SHARES OF GRID COMPANIES

Grid companies	Change*		Grid companies	Change*	
	for 5 days	from 31.12.24		for 5 days	from 31.12.24
Rosseti, ordinary shares	-0,03%	2,52%	Rosseti Ural	4,74%	20,16%
Rosseti Centre	1,81%	3,46%	Rosseti North-West	9,71%	26,26%
Rosseti Centre and Volga region	2,99%	7,30%	Rosseti Siberia	0,50%	5,75%
Rosseti Volga	1,79%	9,82%	Rosseti South	3,50%	18,82%
Rosseti Moscow Region	5,62%	10,95%	Rosseti Lenenergo, ordinary shares	1,77%	13,76%
Rosseti Northern Caucasus	5,63%	12,20%	Rosseti Tomsk, ordinary shares	5,81%	15,90%

Source: data from moex.com, Company calculations

* - at the market price at MOEX