

ELECTRIC POWER INDUSTRY NEWS

SKM: "Demand in 1 PZ in January was 3% lower than last year, in 2 PZ - 1%"

Amid warm weather, electricity consumption in January 2025 in both price zones of the Wholesale Electricity and Capacity Market decreased both compared to last January and compared to December 2024, according to the monthly analytical report of SKM.PRO.

The average hourly energy demand in the first price zone (1 PZ, the European part and the Urals) in January was 106.2 GW, which is 3% less than a year earlier and 1% lower than the figure for December. Generation decreased by the same values and amounted to 109.5 GW. Over the year, the average price of electricity in 1 PZ increased by 12% (RUB 201) and in January amounted to RUB 1,844 per 1 MWh.

Read full text: <https://peretok.ru/>

COMPANY NEWS

Rosseti Centre identified key areas of work in 2025

Boris Ebzeev, General Director of Rosseti Centre, PJSC - managing organization of Rosseti Centre and Volga region, PJSC, held a meeting to summarize the results of work for 2024 and outline the main tasks for 2025. The event was attended by heads of the executive office, as well as branches of the companies (in videoconferencing mode).

It was noted that in the reporting period, the companies ensured the stable operation of the energy system in the regions of presence, despite external challenges and difficult weather conditions. It was possible to maintain stable financial indicators and fulfill all obligations to employees and partners.

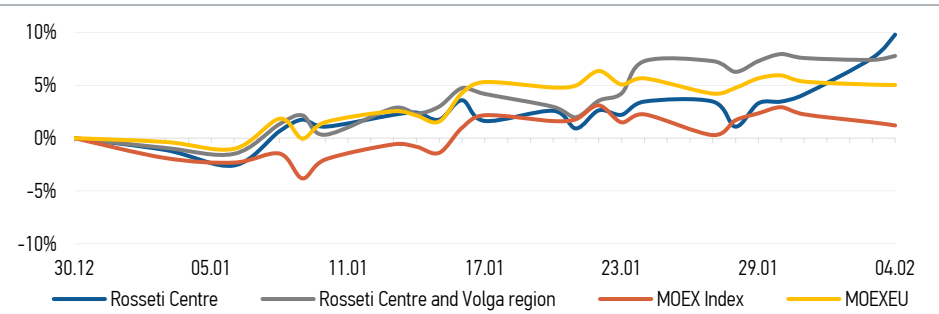
Read full text: <https://mrsk-1.ru/>

Kirovenergo reminds of the need to comply with electrical safety rules when clearing roofs of snow and ice

The branch of Rosseti Centre and Volga region, PJSC - Kirovenergo reminds building owners, heads of enterprises, institutions, organizations and owners of private residential buildings of the need to promptly clear roofs of snow and ice and comply with electrical safety rules when carrying out these works.

Read full text: <https://mrsk-cp.ru/>

CHANGES OF KEY INDEXES AND SHARES OF THE COMPANIES



IR-NEWS

- Boris Ebzeev headed [Rosseti Centre](#) – managing organization of [Rosseti Centre and Volga region](#)
- [Rosseti Centre](#) – managing organization of [Rosseti Centre and Volga region](#) published a presentation on the results of operations of the companies for 9 months of 2024 under IFRS
- [Rosseti Centre and Rosseti Centre and Volga region](#) assigned the highest non-financial reporting rating

Rosseti Centre, PJSC

119017, Moscow, Malaya Ordynka St., 15

Corporate Governance Department

+7 (495) 747 92 92, ext. 33-34

ir@mrsk-1.ru

<http://www.mrsk-1.ru/en/investors/>



World indexes	Value	Change	
		per day	fr 31.12.24
MOEX Russia	2 917,71	-0,29%	1,20%
S&P 500	6 037,88	0,72%	2,22%
FTSE 100	8 570,77	-0,15%	5,54%
Nikkei	38 798,37	0,72%	-2,75%
Sensex	78 583,81	1,81%	0,43%
CSI300	3 817,08	0,00%	-4,55%
Bovespa	125 147,42	-0,65%	4,04%

Source: MOEX, Company calculations

Currency rates	Value	Change	
		per day	fr 31.12.24
USD/RUB	99,9433	2,18%	-1,71%
EURO/RUB	102,4910	0,35%	-3,40%

Source: Central Bank of Russia, Company calculations

Liquidity of shares	Rosseti Centre & Volga Reg	
	Rosseti Centre	Rosseti Centre & Volga Reg
Number of deals, pcs	3 810	612
Trading volume, P mln	41,9	8,8
Trading volume, mln pcs	79,6	23,8
Average trading volume over the last 30 days, mln pcs	54,5	75,3
% of the share capital	0,19%	0,02%

Source: MOEX, Company calculations

Shares	Price*, P	MCap, P bln	MCap, \$ mln
Rosseti Centre	0,5262	22,22	222,28
Rosseti Centre and Volga region	0,3708	41,79	418,12

Source: MOEX, Company calculations

Comparison with indexes	Change	
	per day	fr 31.12.24
STOXX 600 Utilities	0,33%	2,25%
MoexEU	-0,03%	5,04%
Rosseti Centre*	2,06%	9,81%
Rosseti Centre and Volga region*	0,35%	7,79%

Source: MOEX, Company calculations

Grid companies	Change*	
	per day	fr 31.12.24
Rosseti	-0,28%	0,73%
Rosseti Volga	0,37%	5,18%
Rosseti Moscow Region	0,70%	10,65%
Rosseti Northern Caucasus	0,00%	8,17%
Rosseti North-West	1,21%	18,72%
Rosseti Ural	0,99%	19,58%
Rosseti Siberia	3,98%	4,80%
Rosseti South	0,36%	18,14%
Rosseti Lenenergo	0,20%	9,08%
Rosseti Tomsk	0,00%	26,50%

Source: MOEX, Company calculations

* - at the market price at MOEX

Tickers

Moscow Exchange (MOEX)

Bloomberg

Reuters

[MRKC](#)

[MRKC.RM](#)

[MRKC.MM](#)