

## ELECTRIC POWER INDUSTRY NEWS

### Debts of Russians for electricity in 2021 amounted to 69.1 billion rubles

The debt of the population of Russia for electricity at the end of 2021 increased by 2.5 billion rubles compared to the same indicator for 2020 and amounted to 69.1 billion rubles. This is stated in the materials of the Centre for Financial Settlements (CFR).

Read full text: <https://www.kommersant.ru/>

## COMPANY NEWS

### Tamboverenergo improves the reliability of power supply to consumers in the region

The branch of Rosseti Centre, PJSC - Tamboverenergo carries out systematic work to improve the reliability of power supply to consumers in the Tambov region. An important place in it is given to technical measures, including the replacement of tap inputs leading from power lines to households, using self-supporting insulated wire.

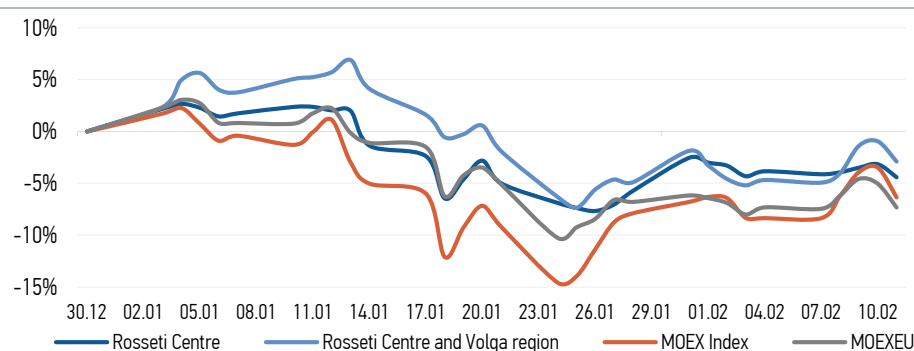
Read full text: <https://tambov.mk.ru/>

### The branch "Vladimirenergo" summed up the results of the investment program for 2021

The branch of Rosseti Centre and Volga region, PJSC - Vladimirenergo summed up the expected results of the implementation of the investment program for 12 months of 2021.

Read full text: [https://mrsk-cp.ru/press/company\\_news/](https://mrsk-cp.ru/press/company_news/)

## CHANGES OF KEY INDEXES AND SHARES OF THE COMPANIES



## IR-NEWS

- [Rosseti Centre](#) and [Rosseti Centre and Volga region](#) approved the Companies' Business Plan for 2022
- [Rosseti Centre - managing organization of Rosseti Centre and Volga region held a conference call and webcast on the results for 9 months of 2021](#)
- [Rosseti Centre](#) and [Rosseti Centre and Volga region](#) published their performance results for 9 months of 2021 under IFRS

## Rosseti Centre, PJSC

119017, Moscow, Malaya Ordynka St., 15

Corporate Governance Department

+7 (495) 747 92 92, ext. 33-34

ir@mrsk-1.ru

<http://www.mrsk-1.ru/en/investors/>



World indexes	Value	Change	
		per day	fr 31.12.21
MOEX Russia	3 546,62	-2,99%	-6,35%
S&P 500	4 418,64	-1,90%	-7,29%
FTSE 100	7 639,76	-0,43%	3,46%
Nikkei	27 697,08	0,00%	-3,80%
Sensex	58 152,92	-1,31%	-0,17%
CSI300	4 601,40	-0,83%	-6,86%
Bovespa	113 572,40	0,18%	8,35%

Source: MOEX, Company calculations

Currency rates	Value	Change	
		per day	fr 31.12.21
USD/RUB	74,7241	-0,10%	0,58%
EURO/RUB	85,3798	0,00%	1,56%

Source: Central Bank of Russia, Company calculations

Liquidity of shares	Rosseti Centre & Volga Reg	
	Rosseti Centre	Rosseti Centre & Volga Reg
Number of deals, pcs	629	1 062
Trading volume, P mln	4,4	14,8
Trading volume, mln pcs	11,3	66,2
Average trading volume over the last 30 days, mln pcs	21,2	79,0
% of the share capital	0,03%	0,06%

Source: MOEX, Company calculations

Shares	Price*, P	MCap, P bln	MCap, \$ mln
Rosseti Centre	0,3942	16,64	222,72
Rosseti Centre and Volga region	0,2240	25,24	337,83

Source: MOEX, Company calculations

Comparison with indexes	Change	
	per day	fr 31.12.21
STOXX 600 Utilities	-0,55%	-4,63%
MoexEU	-2,42%	-7,34%
Rosseti Centre*	-1,30%	-4,41%
Rosseti Centre and Volga region*	-1,97%	-2,90%

Source: MOEX, Company calculations

Grid companies	Change*	
	per day	fr 31.12.21
Rosseti	-1,84%	-8,76%
Rosseti FGC UES	-3,74%	0,00%
Rosseti Volga	0,44%	-7,55%
Rosseti Moscow Region	-0,70%	-2,10%
Rosseti Northern Caucasus	0,57%	-8,35%
Rosseti North-West	-1,72%	-0,39%
Rosseti Ural	-1,47%	-1,36%
Rosseti Siberia	-1,10%	-9,91%
Rosseti South	0,23%	-4,76%
Rosseti Lenenergo	2,33%	-0,48%
Rosseti Tomsk	0,32%	-12,47%
Rosseti Kuban	0,16%	-6,39%

Source: MOEX, Company calculations

\* - at the market price at MOEX

## Tickers

Moscow Exchange (MOEX)

Bloomberg

Reuters

[MRKC](#)

[MRKC.RM](#)

[MRKC.MM](#)