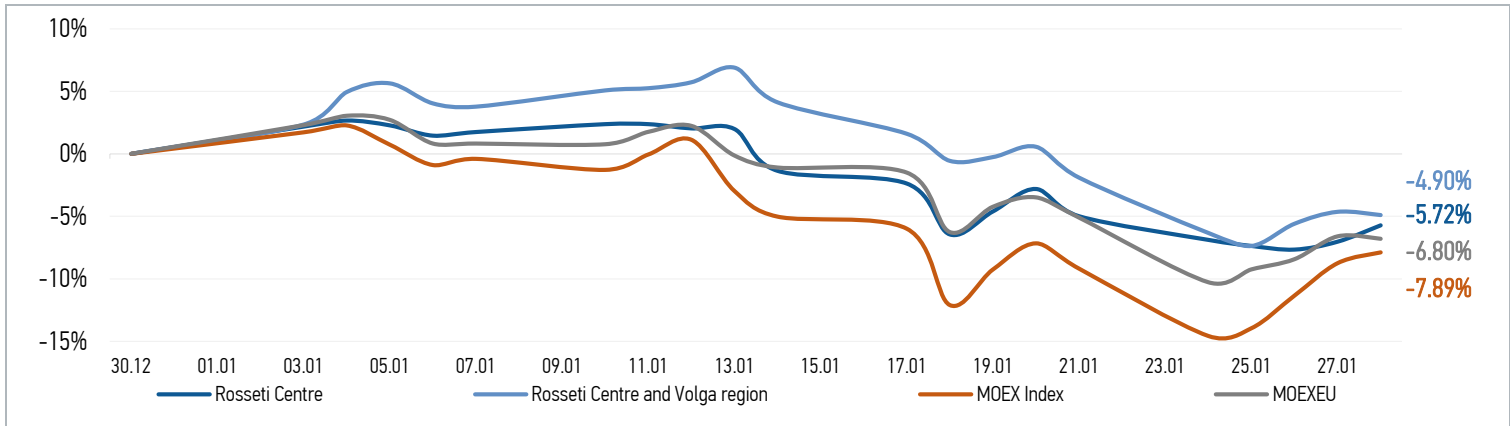


CHANGES OF KEY INDEXES AND SHARES OF THE COMPANIES

SHARES OF ROSSETI CENTRE

Date	Market price, RUB	Market price change, %	Trading volume, RUB	Trading volume, pcs	% of share capital	Number of deals, pcs
24.01.2022	0,3840	-1,99%	23 000 237	59 902 000	0,14%	1 766
25.01.2022	0,3820	-0,52%	15 193 337	39 766 000	0,09%	1 021
26.01.2022	0,3808	-0,31%	10 988 101	28 853 000	0,07%	804
27.01.2022	0,3834	0,68%	13 501 833	35 223 000	0,08%	832
28.01.2022	0,3888	1,41%	5 489 451	14 116 000	0,03%	565
Average trading volume over the last 30 days				20 747 933	0,05%	

SHARES OF ROSSETI CENTRE AND VOLGA REGION

Date	Market price, RUB	Market price change, %	Trading volume, RUB	Trading volume, pcs	% of share capital	Number of deals, pcs
24.01.2022	0,2161	-4,51%	63 943 132	295 950 000	0,26%	4 223
25.01.2022	0,2137	-1,11%	24 676 451	115 490 000	0,10%	2 092
26.01.2022	0,2178	1,92%	17 055 958	78 320 000	0,07%	1 535
27.01.2022	0,22	1,01%	29 593 433	134 530 000	0,12%	1 929
28.01.2022	0,2194	-0,27%	15 158 862	69 080 000	0,06%	1 321
Average trading volume over the last 30 days				83 804 000	0,07%	

CHANGES OF PRICES OF SHARES OF GRID COMPANIES

Grid companies	Change*		Grid companies	Change*	
	for 5 days	from 31.12.20		for 5 days	from 31.12.20
Rosseti, ordinary shares	-0,27%	-8,68%	Rosseti North-West	3,46%	-1,65%
Rosseti FGC UES	-6,03%	-10,82%	Rosseti Ural	-0,84%	-6,80%
Rosseti Centre	-0,77%	-5,72%	Rosseti Siberia	-2,26%	-12,93%
Rosseti Centre and Volga region	-3,05%	-4,90%	Rosseti South	-0,45%	-2,44%
Rosseti Volga	-0,63%	-4,93%	Rosseti Lenenergo, ordinary shares	-0,63%	-6,32%
Rosseti Moscow Region	0,38%	-2,95%	Rosseti Tomsk, ordinary shares	-4,11%	-16,07%
Rosseti Northern Caucasus	-9,22%	-12,74%	Rosseti Kuban	-5,29%	-7,31%

Source: data from moex.com, Company calculations

* - at the market price at MOEX