

### ELECTRIC POWER INDUSTRY NEWS

#### Businesses are targeting thermal power plants. Part of the payment for power may be allocated as a separate fee

As Kommersant found out, part of the surcharges to the price of power, through which the industry pays for the construction of energy facilities and subsidizes tariffs in different regions, can be allocated as a separate targeted fee. Deputy Prime Minister Alexander Novak gave instructions to work on this issue. Regulators have yet to decide what surcharges can be included in such a payment, who will pay the fee and what the administration procedure will be.

Read full text: <https://www.kommersant.ru/>

### COMPANY NEWS

#### Bryanskenergo and Bryanskelectro warn: the security zone of power lines is a place of increased danger!

In order to prevent cases of electrical injuries and disruption of power supply to consumers, the branch of Rosseti Centre, PJSC - Bryanskenergo and Bryanskelectro LLC remind you of the need to comply with the rules of safe behaviour in the security zones of power lines, which are places of increased danger. Security zones are installed along overhead power lines, as well as air space corresponding to the height of the poles and extending in both directions from the outer wires by 15 metres for 35 kV lines and 20 metres for 110 kV lines.

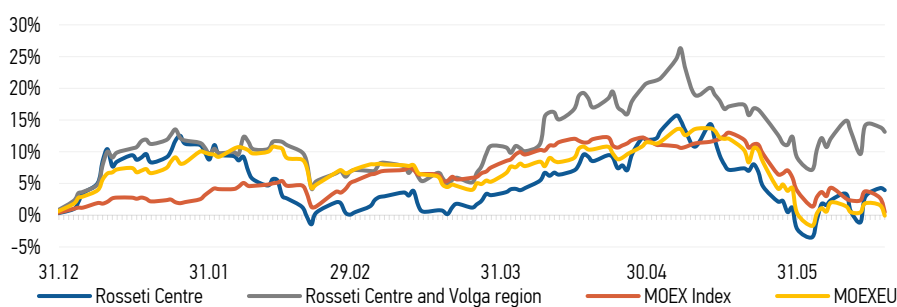
Read full text: <https://www.bryansk.kp.ru/>

#### Rosseti launched the Korsakovo substation in the Kaluga region

Kalugaenergo (a branch of Rosseti Centre and Volga region, PJSC) commissioned a highly automated power centre in the Zhukovsky district of the Kaluga region - the Korsakovo 35/10 kV substation, Rosseti Centre and Volga region reports on its VKontakte page.

Read full text: <https://www.interfax-russia.ru/>

### CHANGES OF KEY INDEXES AND SHARES OF THE COMPANIES



### IR-NEWS

- Annual General Meeting of Shareholders of [Rosseti Centre and Volga region, PJSC](#) held
- [Rosseti Centre](#) and [Rosseti Centre and Volga region](#) published performance results for 3 months of 2024 under IFRS
- On the decisions taken by the management bodies of [Rosseti Centre](#) and of [Rosseti Centre and Volga region](#)

### Rosseti Centre, PJSC

119017, Moscow, Malaya Ordynka St., 15

#### Corporate Governance Department

+7 (495) 747 92 92, ext. 33-34

ir@mrsk-1.ru

<http://www.mrsk-1.ru/en/investors/>



### Tickers

Moscow Exchange (MOEX)

Bloomberg

Reuters

[MRKC](#)

[MRKC.RM](#)

[MRKC.MM](#)

World indexes	Value	Change	
		per day	fr 31.12.23
MOEX Russia	3 114.15	-2.18%	0.49%
S&P 500	5 487.03	0.25%	43.29%
FTSE 100	8 191.29	0.60%	9.92%
Nikkei	38 482.11	1.00%	49.04%
Sensex	77 301.14	0.40%	27.05%
CSI300	3 545.59	0.27%	-8.07%
Bovespa	119 630.44	0.41%	13.57%

Source: MOEX, Company calculations

Currency rates	Value	Change	
		per day	fr 31.12.23
USD/RUB	89.0499	-0.02%	-1.39%
EURO/RUB	95.3906	0.25%	-5.13%

Source: Central Bank of Russia, Company calculations

Liquidity of shares	Rosseti Centre & Volga Reg	
	Rosseti Centre	Rosseti Centre & Volga Reg
Number of deals, pcs	2 104	1 757
Trading volume, P mln	30.0	46.0
Trading volume, mln pcs	51.3	131.8
Average trading volume over the last 30 days, mln pcs	96.2	294.9
% of the share capital	0.12%	0.12%

Source: MOEX, Company calculations

Shares	Price*, P	MCap, P bln	MCap, \$ mln
Rosseti Centre	0.5848	24.69	277.25
Rosseti Centre and Volga region	0.3488	39.31	441.43

Source: MOEX, Company calculations

Comparison with indexes	Change	
	per day	fr 31.12.23
STOXX 600 Utilities	1.50%	3.90%
MoexEU	-1.64%	-0.06%
Rosseti Centre*	-0.31%	3.95%
Rosseti Centre and Volga region*	-0.66%	13.14%

Source: MOEX, Company calculations

Grid companies	Change*	
	per day	fr 31.12.23
Rosseti	-1.46%	-3.39%
Rosseti Volga	-0.44%	23.10%
Rosseti Moscow Region	-0.99%	2.23%
Rosseti Northern Caucasus	-0.92%	-1.58%
Rosseti North-West	-2.39%	-5.04%
Rosseti Ural	-2.10%	36.99%
Rosseti Siberia	-2.20%	-4.24%
Rosseti South	-2.31%	17.72%
Rosseti Lenenergo	-2.98%	4.32%
Rosseti Tomsk	0.46%	29.79%
Rosseti Kuban	-1.10%	19.23%

Source: MOEX, Company calculations

\* - at the market price at MOEX