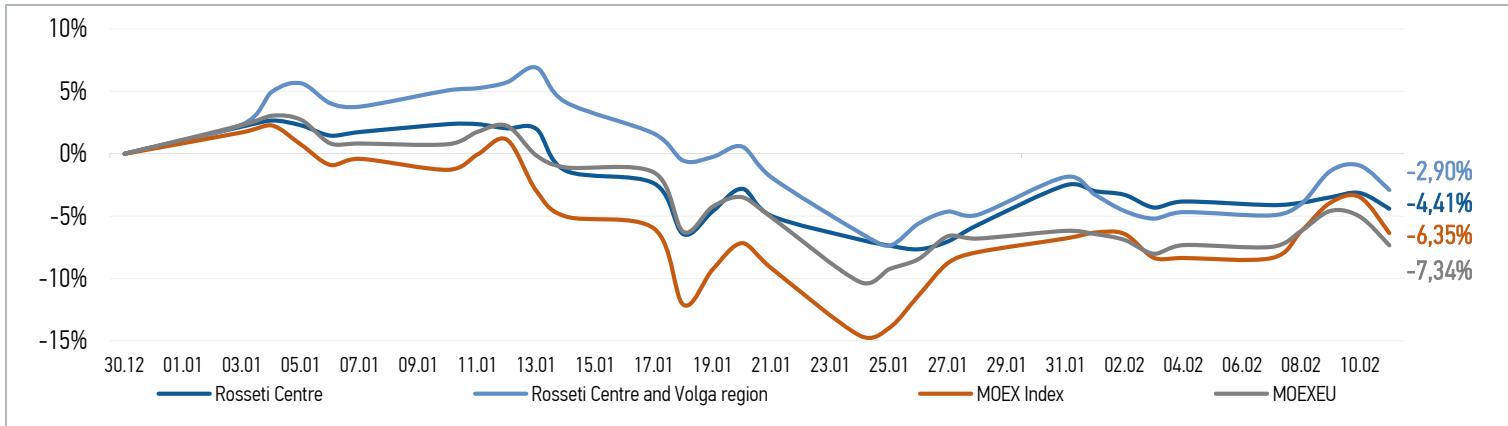


**CHANGES OF KEY INDEXES AND SHARES OF THE COMPANIES**

**SHARES OF ROSSETI CENTRE**

Date	Market price, RUB	Market price change, %	Trading volume, RUB	Trading volume, pcs	% of share capital	Number of deals, pcs
07.02.2022	0,3954	-0,30%	2 894 022	7 320 000	0,02%	347
08.02.2022	0,3962	0,20%	4 375 529	11 045 000	0,03%	387
09.02.2022	0,3980	0,45%	18 014 109	45 269 000	0,11%	1 621
10.02.2022	0,3994	0,35%	12 469 363	31 216 000	0,07%	964
11.02.2022	0,3942	-1,30%	4 443 004	11 272 000	0,03%	629
<b>Average trading volume over the last 30 days</b>				<b>21 191 333</b>	<b>0,05%</b>	

**SHARES OF ROSSETI CENTRE AND VOLGA REGION**

Date	Market price, RUB	Market price change, %	Trading volume, RUB	Trading volume, pcs	% of share capital	Number of deals, pcs
07.02.2022	0,2193	-0,27%	7 386 549	33 680 000	0,03%	610
08.02.2022	0,2214	0,96%	15 840 676	71 550 000	0,06%	878
09.02.2022	0,2275	2,76%	31 554 759	138 690 000	0,12%	1 680
10.02.2022	0,2285	0,44%	8 603 322	37 650 000	0,03%	720
11.02.2022	0,2240	-1,97%	14 833 713	66 220 000	0,06%	1 062
<b>Average trading volume over the last 30 days</b>				<b>79 045 333</b>	<b>0,07%</b>	

**CHANGES OF PRICES OF SHARES OF GRID COMPANIES**

Grid companies	Change*		Grid companies	Change*	
	for 5 days	from 31.12.20		for 5 days	from 31.12.20
Rosseti, ordinary shares	1,78%	-8,76%	Rosseti North-West	1,38%	-0,39%
Rosseti FGC UES	0,72%	0,00%	Rosseti Ural	1,63%	-1,36%
Rosseti Centre	-0,61%	-4,41%	Rosseti Siberia	7,00%	-9,91%
Rosseti Centre and Volga region	1,86%	-2,90%	Rosseti South	-0,69%	-4,76%
Rosseti Volga	-0,43%	-7,55%	Rosseti Lenenergo, ordinary shares	5,17%	-0,48%
Rosseti Moscow Region	1,47%	-2,10%	Rosseti Tomsk, ordinary shares	-7,33%	-12,47%
Rosseti Northern Caucasus	-0,24%	-8,35%	Rosseti Kuban	1,49%	-6,39%

Source: data from moex.com, Company calculations

\* - at the market price at MOEX