

ELECTRIC POWER INDUSTRY NEWS

The Ministry of Energy expects electricity consumption to grow in the 2024-2025 heating season at a level of 3.3%

Energy consumption in the Russian Federation has grown by 4% since the beginning of the year, the growth in electricity consumption in the 2024-2025 heating season will be 3.3% compared to the same period last year, the Ministry of Energy reported following the results of the All-Russian conference "On the progress of preparation of electric power industry entities and housing and communal services facilities for the 2024-2025 heating season" held on 7 October under the chairmanship of the head of the ministry, Sergei Tsivilev.

Read full text: <https://bigpowernews.ru/>

COMPANY NEWS

Rosseti Centre approved a deal to consolidate 100% of the authorized capital of Yaroslavl Electric Grid Company

The Board of Directors of Rosseti Centre approved a deal to consolidate 100% of the authorized capital of Yaroslavl Electric Grid Company, which services the power grids of four district centres (Pereslavl-Zalessky, Lyubim, Myshkin and the settlement of Nekrasovskoye). The amount of the deal is not specified.

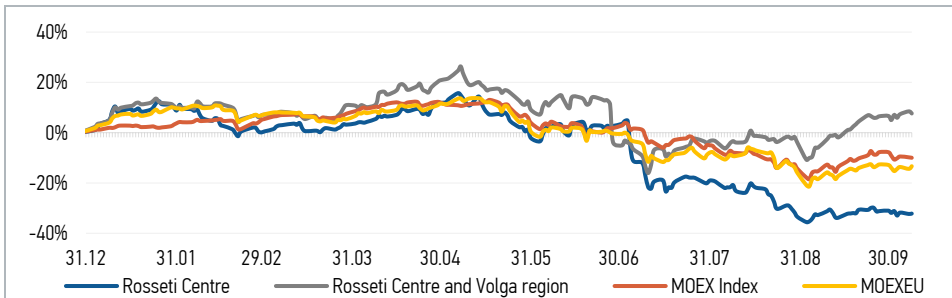
Read full text: <https://www.eprussia.ru/>

Results of the competition for the best labour protection crew in the Nizhnoenergo branch for the 3rd quarter of 2024

The competition was held among the structural divisions of the branch to assess compliance with labour protection and safety rules in the workplace. Based on the results of the competition commission's work, winners were determined in three categories: 1. The best crew and vehicle for labour protection among distribution grid crews, 2. The best crew and vehicle for labour protection among high-voltage grid crews, 3. The best crew for labour protection among first responding and mobile crews.

Read full text: <https://mrsk-cp.ru/>

CHANGES OF KEY INDEXES AND SHARES OF THE COMPANIES



IR-NEWS

- All branches of [Rosseti Centre and Rosseti Centre and Volga region](#) have been defined as systemically important territorial grid organizations
- [Rosseti Centre](#) – managing organization of [Rosseti Centre and Volga region](#) published a presentation on the results of operations of the companies for 6 months of 2024 under IFRS
- The Russian Institute of Directors has confirmed the National Corporate Governance Rating (NCGR) of [Rosseti Centre](#) at NCGR 7 "Developed Corporate Governance Practice"

Rosseti Centre, PJSC

119017, Moscow, Malaya Ordynka St., 15

Corporate Governance Department

+7 (495) 747 92 92, ext. 33-34

ir@mrsk-1.ru

<http://www.mrsk-1.ru/en/investors/>



Tickers

Moscow Exchange (MOEX)

Bloomberg

Reuters

[MRKC](#)

[MRKC.RM](#)

[MRKC.MM](#)

World indexes	Value	Change	
		per day	fr 31.12.23
MOEX Russia	2 788.37	-0.20%	-10.03%
S&P 500	5 751.13	-3.60%	20.57%
FTSE 100	8 190.61	-1.36%	5.91%
Nikkei	38 907.50	-1.08%	16.27%
Sensex	81 634.81	0.72%	13.00%
CSI300	4 256.10	5.93%	24.04%
Bovespa	131 511.73	-0.38%	-1.99%

Source: MOEX, Company calculations

Currency rates	Value	Change	
		per day	fr 31.12.23
USD/RUB	96.0649	1.26%	7.11%
EURO/RUB	105.3069	0.54%	6.16%

Source: Central Bank of Russia, Company calculations

Liquidity of shares	Rosseti Centre	Rosseti Centre & Volga Reg
Number of deals, pcs	862	809
Trading volume, P mln	5.6	19.5
Trading volume, mln pcs	14.8	58.8
Average trading volume over the last 30 days, mln pcs	52.0	121.9
% of the share capital	0.03%	0.05%

Source: MOEX, Company calculations

Shares	Price*, P	MCap, P bln	MCap, \$ mln
Rosseti Centre	0.3816	16.11	167.70
Rosseti Centre and Volga region	0.3317	37.38	389.13

Source: MOEX, Company calculations

Comparison with indexes	Change	
	per day	fr 31.12.23
STOXX 600 Utilities	0.62%	2.17%
MoexEU	1.22%	-13.37%
Rosseti Centre*	0.21%	-32.17%
Rosseti Centre and Volga region*	-0.78%	7.59%

Source: MOEX, Company calculations

Grid companies	Change*	
	per day	fr 31.12.23
Rosseti	0.53%	-23.98%
Rosseti Volga	-0.65%	9.75%
Rosseti Moscow Region	0.13%	-6.07%
Rosseti Northern Caucasus	0.61%	-18.44%
Rosseti North-West	-1.83%	-31.75%
Rosseti Ural	-0.15%	6.46%
Rosseti Siberia	0.00%	-18.61%
Rosseti South	-1.37%	-8.26%
Rosseti Lenenergo	-1.15%	-22.10%
Rosseti Tomsk	-0.57%	2.06%
Rosseti Kuban	-5.17%	-38.91%

Source: MOEX, Company calculations

* - at the market price at MOEX