

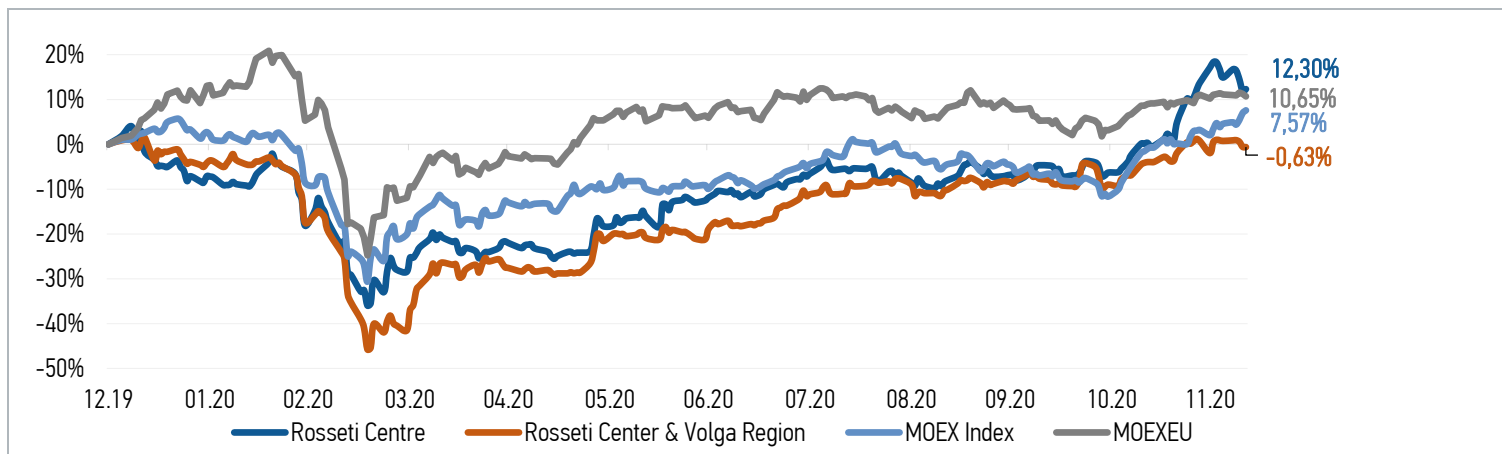
AT 11.12.2020

РОССТЕИ
ЦЕНТРРОССТЕИ
ЦЕНТР И ПРИВОЛЖЬЕ

2020

WEEKLY MARKET REVIEW

CHANGES OF KEY INDEXES AND SHARES OF THE COMPANIES



SHARES OF ROSSETI CENTRE

Date	Market price, RUB	Market price change, %	Trading volume, RUB	Trading volume, pcs	% от УК	Number of deals, pcs
07.12.2020	0,3700	1,15%	6 717 902	18 161 000	0,04%	707
08.12.2020	0,3692	-0,76%	5 569 053	15 084 000	0,04%	535
09.12.2020	0,3628	-1,53%	13 399 138	36 935 000	0,09%	1 109
10.12.2020	0,3544	-1,55%	27 207 539	76 757 000	0,18%	2 150
11.12.2020	0,3560	-0,67%	10 413 277	29 257 000	0,07%	1 035
Average trading volume over the last 30 days				39 701 700	0,09%	

SHARES OF ROSSETI CENTER AND VOLGA REGION

Date	Market price, RUB	Market price change, %	Trading volume, RUB	Trading volume, pcs	% от УК	Number of deals, pcs
07.12.2020	0,2345	-2,51%	88 806 356	378 700 000	0,34%	3 070
08.12.2020	0,2403	3,26%	48 824 588	203 220 000	0,18%	1 939
09.12.2020	0,2416	0,33%	15 615 956	64 640 000	0,06%	817
10.12.2020	0,2413	0,00%	19 145 293	79 330 000	0,07%	888
11.12.2020	0,2410	-0,25%	12 702 775	52 700 000	0,05%	886
Average trading volume over the last 30 days				92 745 667	0,08%	

CHANGES OF PRICES OF SHARES OF GRID COMPANIES

Grid companies	Change*		Grid companies	Change*	
	for 5 days	from 31.12.19		for 5 days	from 31.12.19
Rosseti, ordinary shares	-2,35%	19,21%	Rosseti North-West	-2,99%	-3,17%
Rosseti FGC UES	-0,41%	0,54%	Rosseti Ural	-0,73%	-16,81%
Rosseti Centre	-2,25%	12,30%	Rosseti Siberia	6,93%	10,95%
Rosseti Center and Volga Region	-1,37%	-0,63%	Rosseti South	-3,28%	-23,61%
Rosseti Volga	-0,58%	-23,41%	Rosseti Lenenergo, ordinary shares	-1,62%	-22,66%
Rosseti Moscow Region	-2,20%	13,55%	Rosseti Tomsk, ordinary shares	0,26%	-6,59%
Rosseti Northern Caucasus	-0,34%	-1,53%	Rosseti Kuban	1,18%	9,78%

Source: data from moex.com, Company calculations

* - at the market price at MOEX