

DAILY MARKET REVIEW

ELECTRIC POWER INDUSTRY NEWS

Nikolay Shulginov: The main challenge to the energy sector is created by debtors

Russian Energy Minister Nikolay Shulginov noted that one of the key internal challenges that had an impact on the performance of sectors of the Russian fuel and energy complex (FEC) in 2020 was the deterioration in payment discipline on the part of energy consumers and an increase in the debt burden.

Read full text: <https://www.eprussia.ru/news/>

COMPANY NEWS

Kostromaenergo took part in the Job Fair for graduate students of the Kostroma Power Engineering College named after V.F. Chizhov

Employees of the HR department of the branch "Rosseti Centre Kostromaenergo" and heads of technical services took part in the Job Fair, which was held at the Kostroma Power Engineering College (KET). They told students graduating from the specialized educational institution about advantages of working at the branch, about the most promising vacancies in the labour market in the energy industry, as well as about social guarantees for employees provided for in Kostromaenergo.

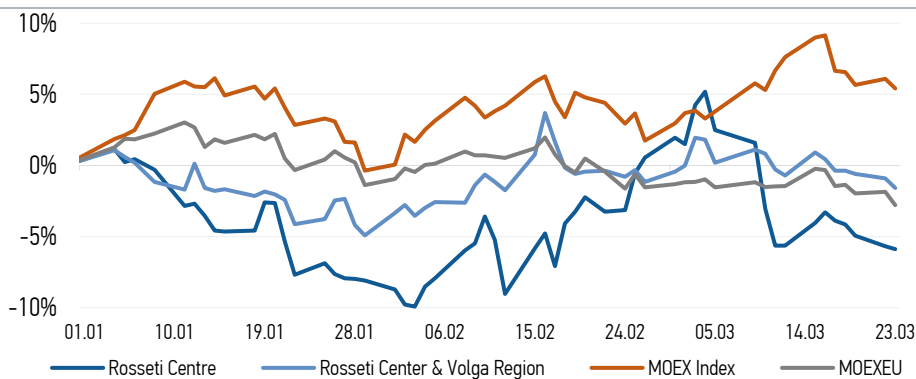
Read full text: <https://www.mrsk-1.ru/press-center/news/>

"Rosseti Center and Volga Region Ivenergo" supported the WorldSkills Russia championship in the Ivanovo region

For the third time in a row, "Rosseti Center and Volga Region Ivenergo" was the official partner of the Regional Championship "Young Professionals" (WorldSkills Russia), held in the Ivanovo region.

Read full text: <https://mrsk-cp.ru/press-center/news/>

CHANGES OF KEY INDEXES AND SHARES OF THE COMPANIES



IR-NEWS

11 March 2021 Audited consolidated financial results of "Rosseti Center and Volga Region" for 2020 were published

10 March 2021 Audited consolidated financial results of "Rosseti Centre" for 2020 were published

25 February 2021 Financial statements of Rosseti Centre and Rosseti Center and Volga Region for 2020 under RAS were published

IDGC of Centre, PJSC

119017, Moscow, Malaya Ordynka St., 15

Corporate Governance Department

+7 (495) 747 92 92, ext. 33-34

ir@mrsk-1.ru

<http://www.mrsk-1.ru/en/investors/>



World indexes	Value	Change	
		per day	fr 31.12.20
MOEX Russia	3 467,21	-0,63%	5,42%
S&P 500	3 910,52	-0,76%	4,11%
FTSE 100	6 699,19	-0,40%	2,19%
Nikkei	28 995,92	-0,61%	5,65%
Sensex	50 051,44	0,56%	4,82%
CSI300	5 009,25	-0,95%	-3,88%
Bovespa	113 261,80	-1,49%	-4,84%

Source: MOEX, Company calculations

Currency rates	Value	Change	
		per day	fr 31.12.20
USD/RUB	74,6085	0,63%	0,99%
EURO/RUB	88,6573	0,25%	-2,23%

Source: Central Bank of Russia, Company calculations

Liquidity of shares	Rosseti Centre	Rosseti Center & Volga Reg
Number of deals, pcs	808	903
Trading volume, ₺ mln	1,8	21,6
Trading volume, mln pcs	4,8	87,0
Average trading volume over the last 30 days, mln pcs	45,7	88,0
% of the share capital	0,01%	0,08%

Source: MOEX, Company calculations

Shares	Price*, ₺	MCap, ₺ bln	MCap, \$ mln
Rosseti Centre	0,3776	15,94	213,67
Rosseti Center & Volga Region	0,2481	27,96	374,76

Source: MOEX, Company calculations

Comparison with indexes	Change	
	per day	fr 31.12.20
STOXX 600 Utilities	1,52%	-1,85%
MoexEU	-0,95%	-2,79%
Rosseti Centre*	-0,21%	-5,88%
Rosseti Center & Volga Region*	-0,68%	-1,59%

Source: MOEX, Company calculations

Grid companies	Change*	
	per day	fr 31.12.20
Rosseti	-2,60%	-14,31%
Rosseti FGC UES	0,15%	-3,39%
Rosseti Volga	0,08%	-2,28%
Rosseti Moscow Region	-0,42%	-15,29%
Rosseti Northern Caucasus	-3,34%	-9,65%
Rosseti North-West	-0,27%	0,74%
Rosseti Ural	0,26%	-3,71%
Rosseti Siberia	-2,19%	-12,65%
Rosseti South	-0,21%	-4,52%
Rosseti Lenenergo	-0,17%	11,28%
Rosseti Tomsk	0,00%	-5,45%
Rosseti Kuban	-0,14%	4,28%

Source: MOEX, Company calculations

* - at the market price at MOEX

ickers

Moscow Exchange (MOEX)

Bloomberg

Reuters

MRKC

MRKC.RM

MRKC.MM