

## ELECTRIC POWER INDUSTRY NEWS

### Rosseti's subsidiaries will be able to make corporate decisions without hostile shareholders

Subsidiaries of PJSC Rosseti will be able to ignore votes of shareholders from hostile jurisdictions when making corporate decisions until the end of 2025, according to presidential decree No. 96 published on the official Internet portal of legal information. The document amends decree of 17 January 2023 No. 16, which temporarily granted the aforementioned opportunity to a number of Russian organizations from the energy complex, mechanical engineering and trade, if they simultaneously meet three conditions. First: sanctions have been imposed on their Russian co-owner; second: the share of hostile co-owners is no more than 50%; third: the revenue of a group of persons of a Russian organization for the previous year exceeds RUB 100 billion.

Read full text: <https://interfax.ru/>

## COMPANY NEWS

### Rosseti Centre plans to conclude regulatory agreements in all regions of presence in 2025

The Board of Directors of Rosseti Centre, PJSC instructed General Director to develop a plan for concluding regulatory agreements in 2025 in all regions of the company's presence, its press service reports. The agreements will be concluded in those settlements where enterprises, individuals and other potential users are not yet clients of the company. This instruction was announced on 19 February at a meeting of the Board of Directors of Rosseti Centre, PJSC.

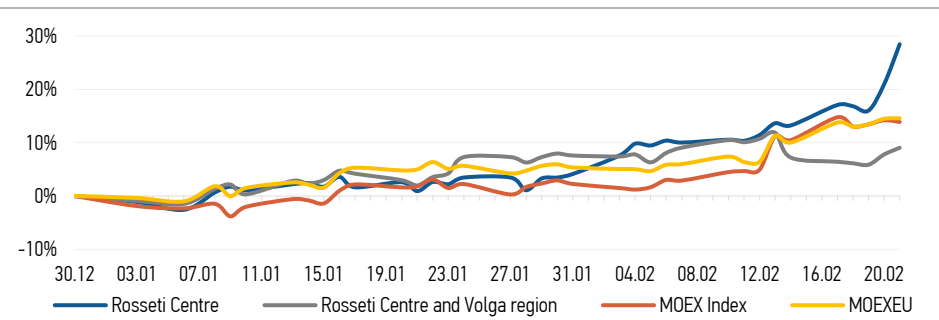
Read full text: <https://eprussia.ru/>

### Power engineers of the future: how to attract young people to the industry was discussed in Tula

On 19–20 February 2025, Tula hosted an educational session dedicated to attracting young specialists to the energy industry. The event was held at the corporate training centre of the private educational institution of additional professional education "Tula training centre "Energetik". The session was attended by specialists from the HR department of Rosseti Centre, PJSC and Rosseti Centre and Volga region, PJSC, as well as representatives of Tula State University and secondary vocational educational institutions.

Read full text: <https://mrsk-cp.ru/>

## CHANGES OF KEY INDEXES AND SHARES OF THE COMPANIES



## IR-NEWS

- [Rosseti Centre](#) and [Rosseti Centre and Volga region](#) approved the Companies' Business Plan for 2025
- Boris Ebzeev headed [Rosseti Centre](#) – managing organization of [Rosseti Centre and Volga region](#)
- [Rosseti Centre](#) – managing organization of [Rosseti Centre and Volga region](#) published a presentation on the results of operations of the companies for 9 months of 2024 under IFRS

## Rosseti Centre, PJSC

119017, Moscow, Malaya Ordynka St., 15

### Corporate Governance Department

+7 (495) 747 92 92, ext. 33-34

ir@mrsk-1.ru

<http://www.mrsk-1.ru/en/investors/>



World indexes	Value	Change	
		per day	fr 31.12.24
MOEX Russia	3 283,29	-0,28%	13,88%
S&P 500	6 013,13	-1,71%	1,80%
FTSE 100	8 659,37	-0,04%	6,63%
Nikkei	38 776,94	0,26%	-2,80%
Sensex	75 311,06	-0,56%	-3,75%
CSI300	3 978,44	1,26%	-0,52%
Bovespa	127 128,06	-0,37%	5,69%

Source: MOEX, Company calculations

Currency rates	Value	Change	
		per day	fr 31.12.24
USD/RUB	88,5103	-2,12%	-12,95%
EURO/RUB	92,4831	-1,70%	-12,84%

Source: Central Bank of Russia, Company calculations

Liquidity of shares	Rosseti Centre	Rosseti Centre & Volga Reg
Number of deals, pcs	10 981	4 229
Trading volume, P mln	226,6	98,9
Trading volume, mln pcs	368,1	263,7
Average trading volume over the last 30 days, mln pcs	63,3	107,3
% of the share capital	0,87%	0,23%

Source: MOEX, Company calculations

Shares	Price*, P	MCap, P bln	MCap, \$ mln
Rosseti Centre	0,6156	25,99	293,63
Rosseti Centre and Volga region	0,3751	42,27	477,60

Source: MOEX, Company calculations

Comparison with indexes	Change	
	per day	fr 31.12.24
STOXX 600 Utilities	0,60%	1,20%
MoexEU	0,09%	14,57%
Rosseti Centre*	6,21%	28,46%
Rosseti Centre and Volga region*	1,16%	9,04%

Source: MOEX, Company calculations

Grid companies	Change*	
	per day	fr 31.12.24
Rosseti	-0,09%	11,08%
Rosseti Volga	2,67%	21,89%
Rosseti Moscow Region	-0,15%	13,09%
Rosseti Northern Caucasus	-1,20%	10,37%
Rosseti North-West	1,07%	25,55%
Rosseti Ural	0,00%	23,20%
Rosseti Siberia	0,75%	6,02%
Rosseti South	0,62%	25,83%
Rosseti Lenenergo	4,03%	32,21%
Rosseti Tomsk	4,22%	22,26%

Source: MOEX, Company calculations

\* - at the market price at MOEX

## Tickers

Moscow Exchange (MOEX)

MRKC

Bloomberg

MRKC.MM

Reuters

MRKC.MM