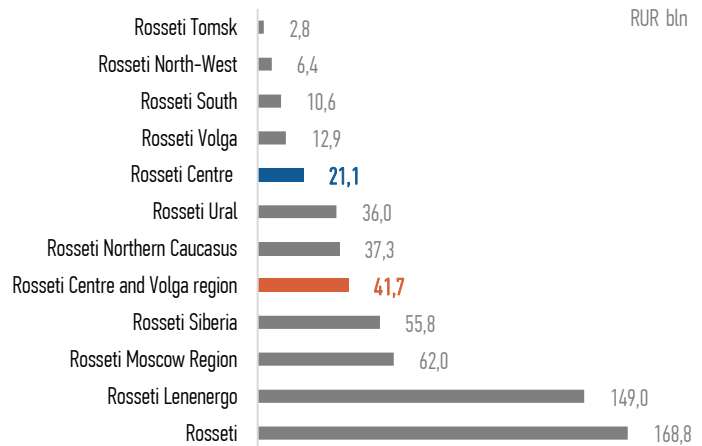
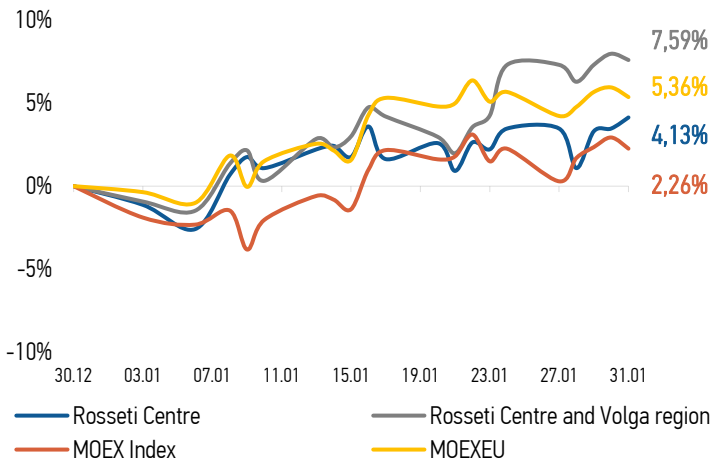


**CHANGES OF KEY INDEXES AND SHARES OF THE COMPANIES**
**CAPITALIZATION**

**SHARES OF ROSSETI CENTRE**

Date	Market price, RUB	Market price change, %	Trading volume, RUB	Trading volume, pcs	% of share capital	Number of deals, pcs
27.01.2025	0,4958	0,00%	19 736 966	39 816 000	0,09%	8 711
28.01.2025	0,4844	-2,30%	16 010 101	33 049 000	0,08%	1 653
29.01.2025	0,4950	2,19%	10 128 899	20 465 000	0,05%	980
30.01.2025	0,4958	0,16%	6 639 400	13 391 000	0,03%	753
31.01.2025	0,4990	0,65%	14 401 615	28 865 000	0,07%	1 136
<b>Average trading volume over the last 30 days</b>				<b>46 947 067</b>	<b>0,11%</b>	

**SHARES OF ROSSETI CENTRE AND VOLGA REGION**

Date	Market price, RUB	Market price change, %	Trading volume, RUB	Trading volume, pcs	% of share capital	Number of deals, pcs
27.01.2025	0,3691	0,00%	21 021 379	56 950 000	0,05%	1 143
28.01.2025	0,3656	-0,95%	20 955 644	57 320 000	0,05%	736
29.01.2025	0,3691	0,96%	8 840 390	23 950 000	0,02%	575
30.01.2025	0,3714	0,62%	14 225 823	38 300 000	0,03%	742
31.01.2025	0,3701	-0,35%	22 041 385	59 550 000	0,05%	991
<b>Average trading volume over the last 30 days</b>				<b>81 919 333</b>	<b>0,07%</b>	

**CHANGES OF PRICES OF SHARES OF GRID COMPANIES**

Grid companies	Change*		Grid companies	Change*	
	for 5 days	from 31.12.24		for 5 days	from 31.12.24
Rosseti, ordinary shares	1,32%	3,88%	Rosseti Ural	0,15%	20,34%
Rosseti Centre	0,65%	4,13%	Rosseti North-West	-5,55%	19,25%
Rosseti Centre and Volga region	0,27%	7,59%	Rosseti Siberia	-2,97%	2,62%
Rosseti Volga	-3,38%	6,11%	Rosseti South	0,43%	19,33%
Rosseti Moscow Region	-1,89%	8,85%	Rosseti Lenenergo, ordinary shares	-2,83%	10,54%
Rosseti Northern Caucasus	-3,15%	8,66%	Rosseti Tomsk, ordinary shares	0,00%	15,90%

Source: data from moex.com, Company calculations

\* - at the market price at MOEX